



Australian Government
Australian Research Council

Presentation to Annual Conference of ANZAM

25 June 2015

Professor Marian Simms
ARC Executive Director

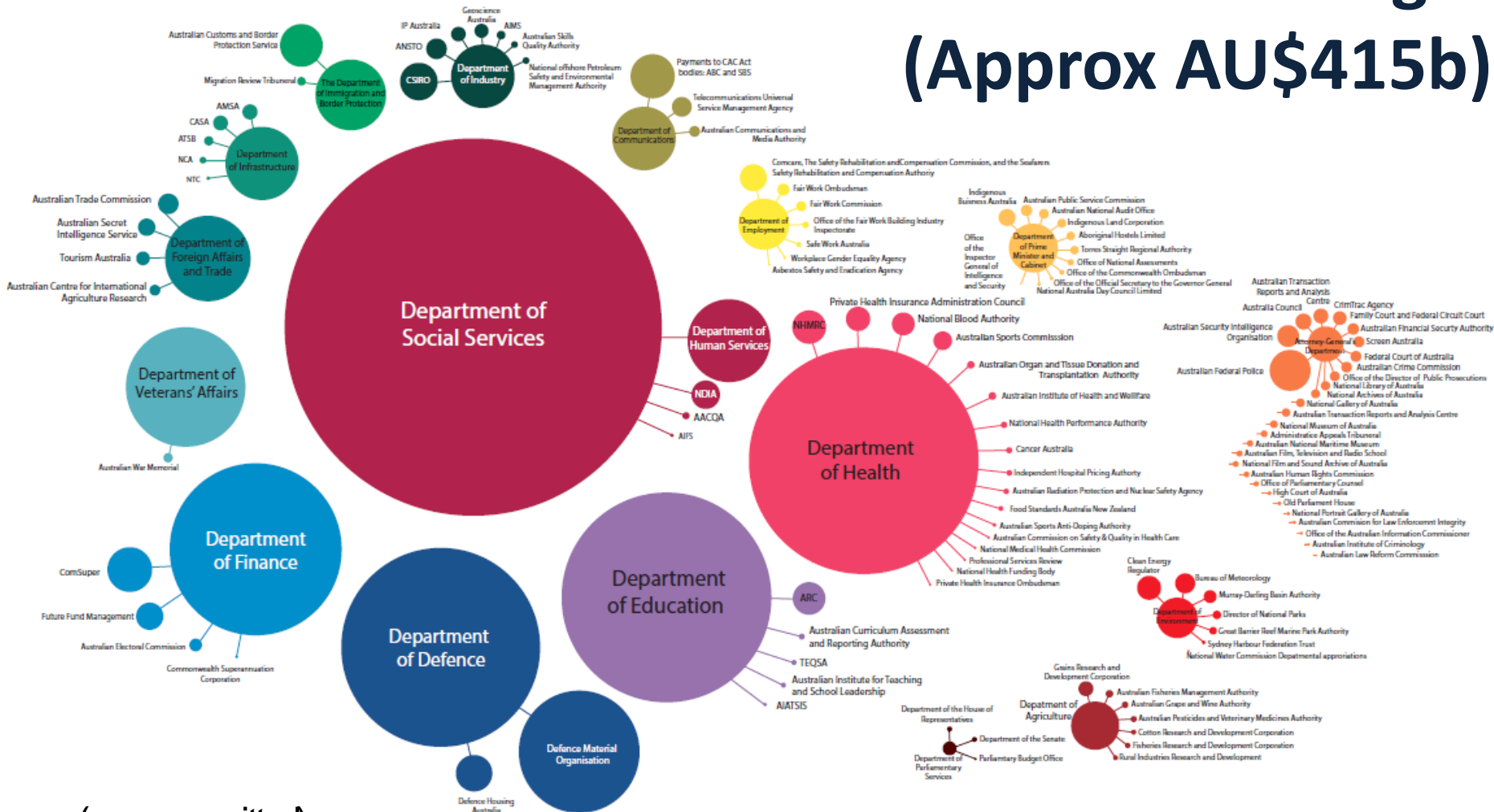
Research



The Australian Research Council

- The Australian Research Council (ARC) is an independent statutory agency within The Department of Education. The ARC's main responsibilities are:
- providing funding for research through the competitive funding schemes of the National Competitive Grants Program (NCGP);
- providing policy advice on research matters to Government;
- Evaluating research quality in Australia through the Excellence in Research for Australia (ERA) exercise;
- and, together with the National Health and Medical Research Council (NHMRC), administering the Australian Research Integrity Committee (ARIC).

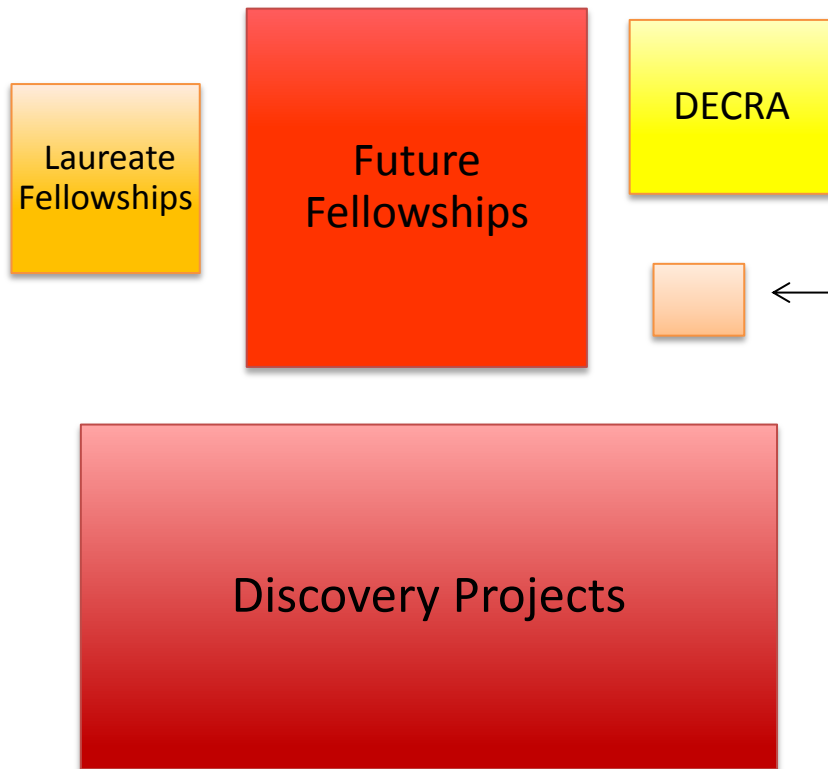
2014–15 Federal Budget (Approx AU\$415b)



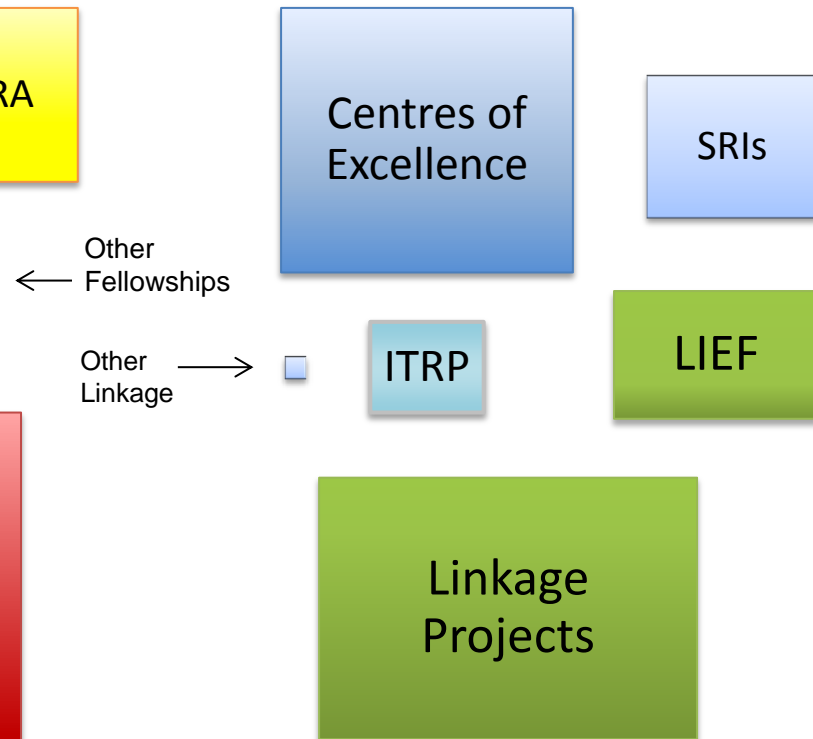
(reasury omitted)

National Competitive Grants Program

Discovery Programs

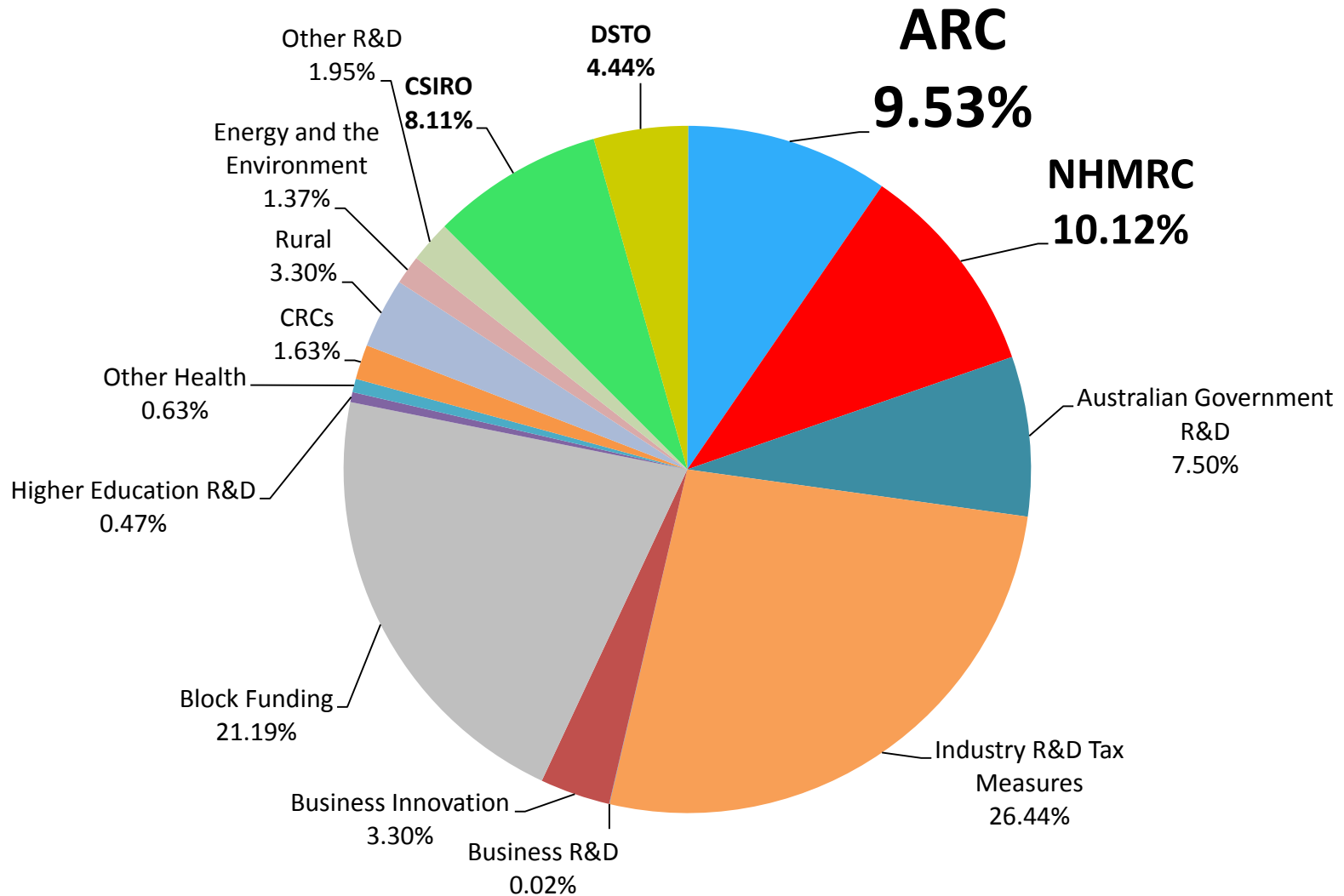


Linkage Programs

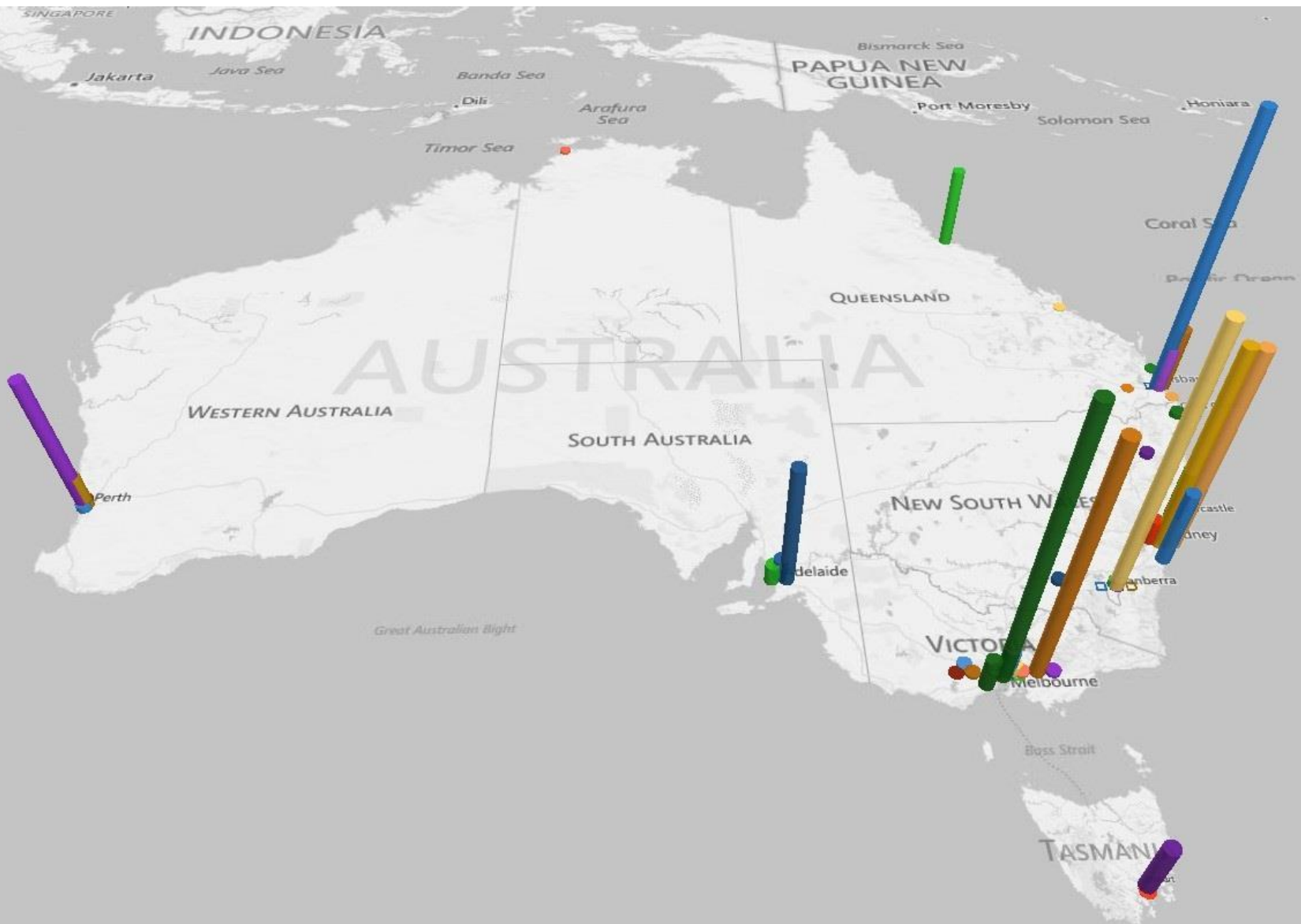


Area of box represents \$\$ **awarded** over the period 2009-2014.
N.B. - Centres of Excellence, SRIs, not awarded in every year.
- ... & ... only funding since .

Australian Government support for science, research and innovation 2014-15 (\$9.2b)



ARC funding by institute 2010–2014





NCGP and Peer Review

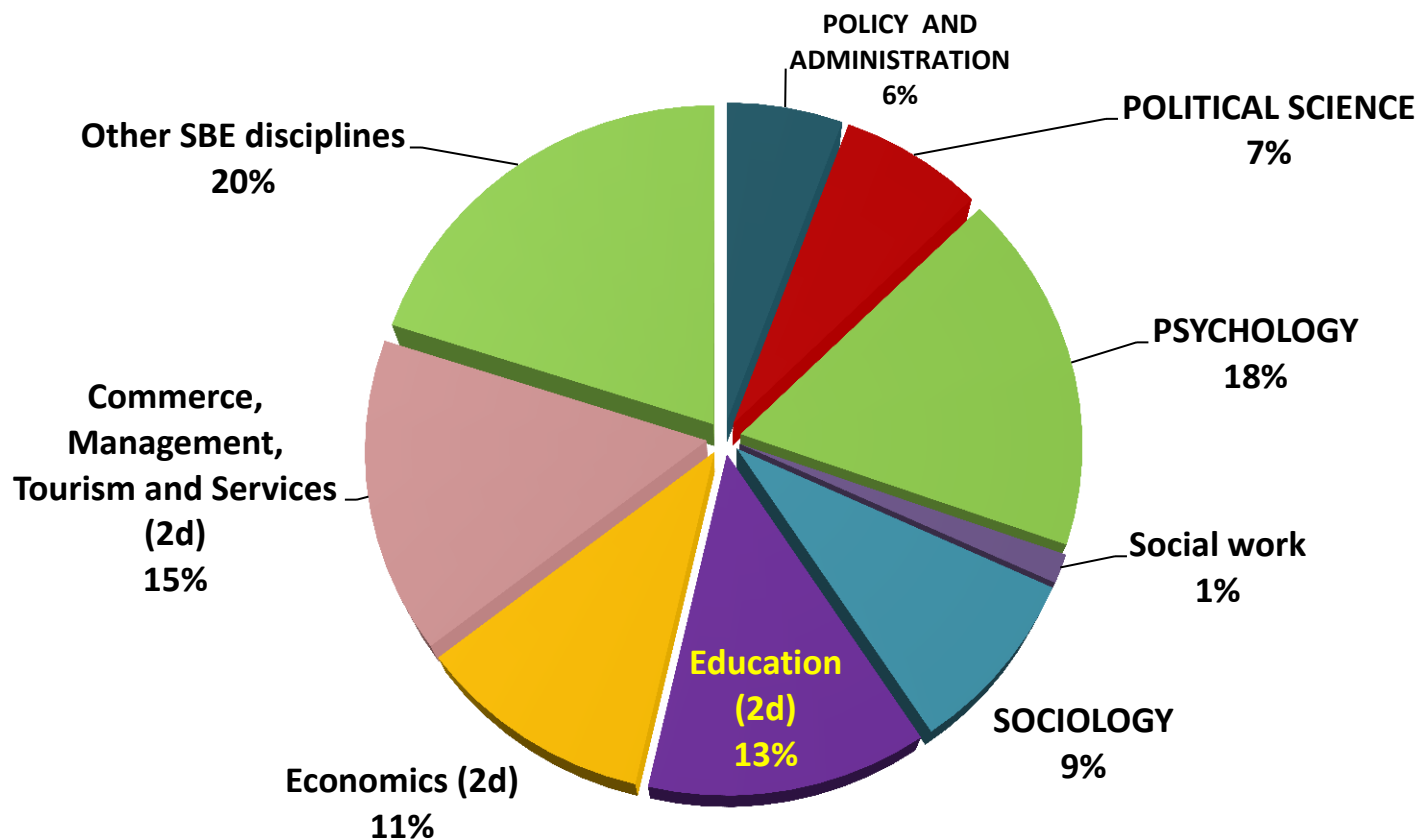
- Under larger schemes, such as *Discovery Projects (DP)* and the *Discovery Early Career Researcher Award (DECRA)*, all five panels of the ARC College convene for selection meetings. In other schemes, such as *Australian Laureate Fellowships* and *Linkage Infrastructure, Equipment and Facilities* schemes, a single interdisciplinary Selection Advisory Committee (SAC) may be utilised. SAC members may be ARC College members and/or other eminent researchers.
- The five panels are: Biological Sciences and Biotechnology (**BSB**), Engineering, Mathematics and Informatics (**EMI**), Humanities and Creative Arts (**HCA**), Physics, Chemistry and Earth Sciences (**PCE**), and Social Behavioural and Economic Sciences (**SBE**).



Research Opportunity

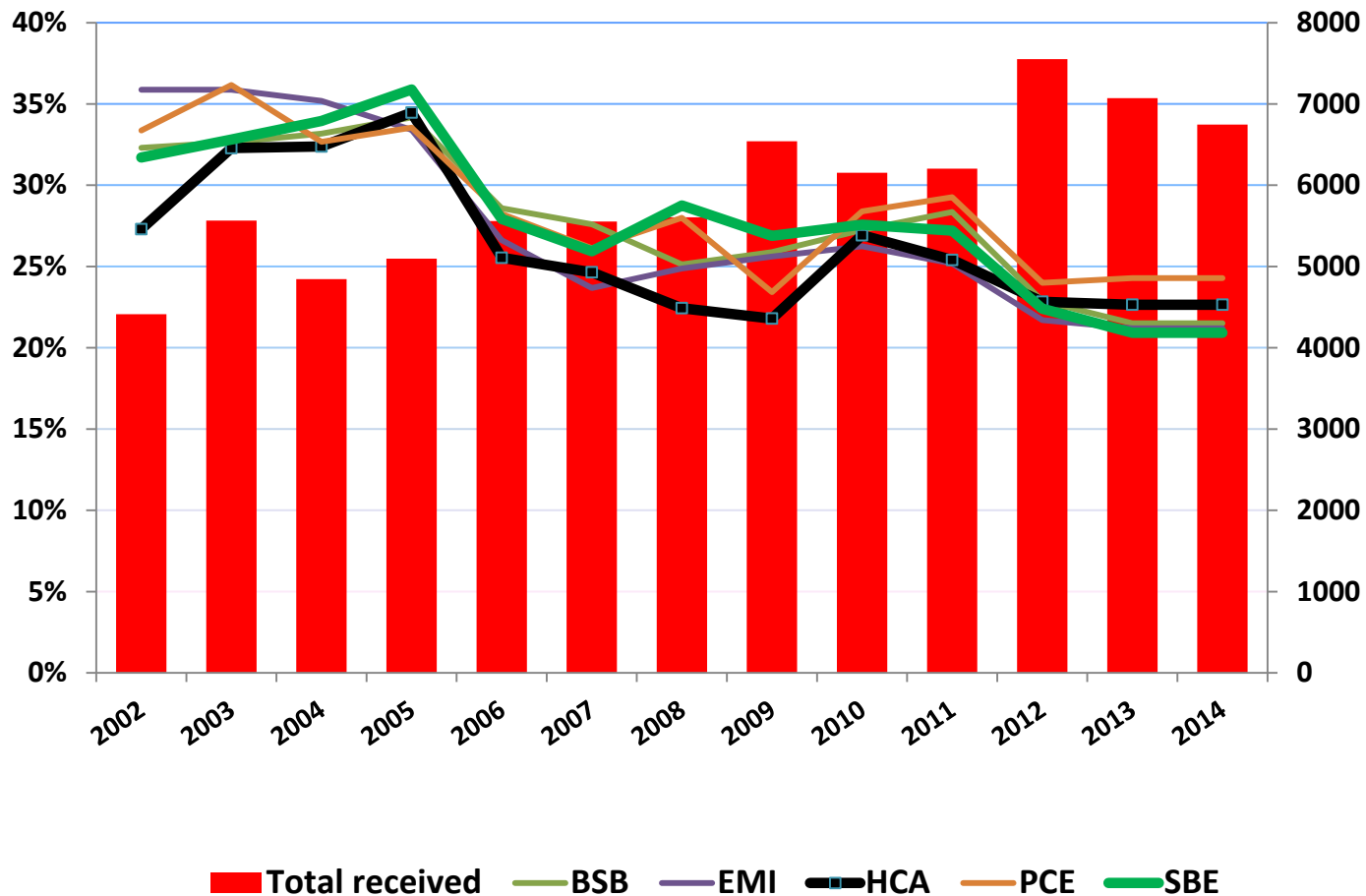
- The ARC is committed to ensuring all eligible researchers have fair access to competitive funding through the National Competitive Grants Program
- The ARC considers that Research Opportunity comprises two separate elements:
 - Career experiences (relative to opportunity)
 - Career interruptions
- The new ROPE Statement (released Feb 2014) is available on the ARC website

Proportion of proposals received in selected disciplines of SBE (2002–2014)

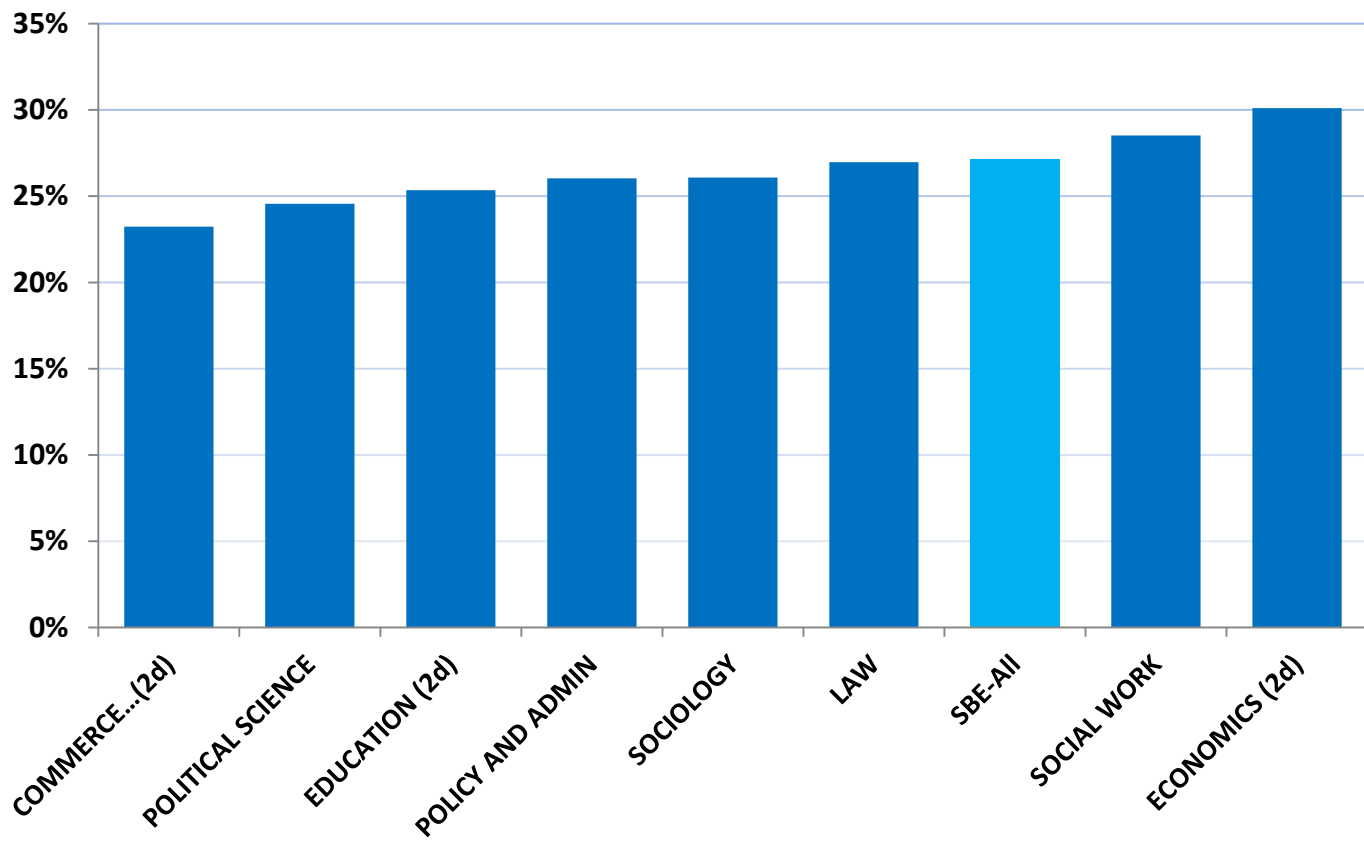


Note—data on basis of FoR codes and those translated from RFCOD for both two-digit and 4-digit disciplines

Total success rate (all schemes, 2002–2014) and number of proposals received in NCGP panels

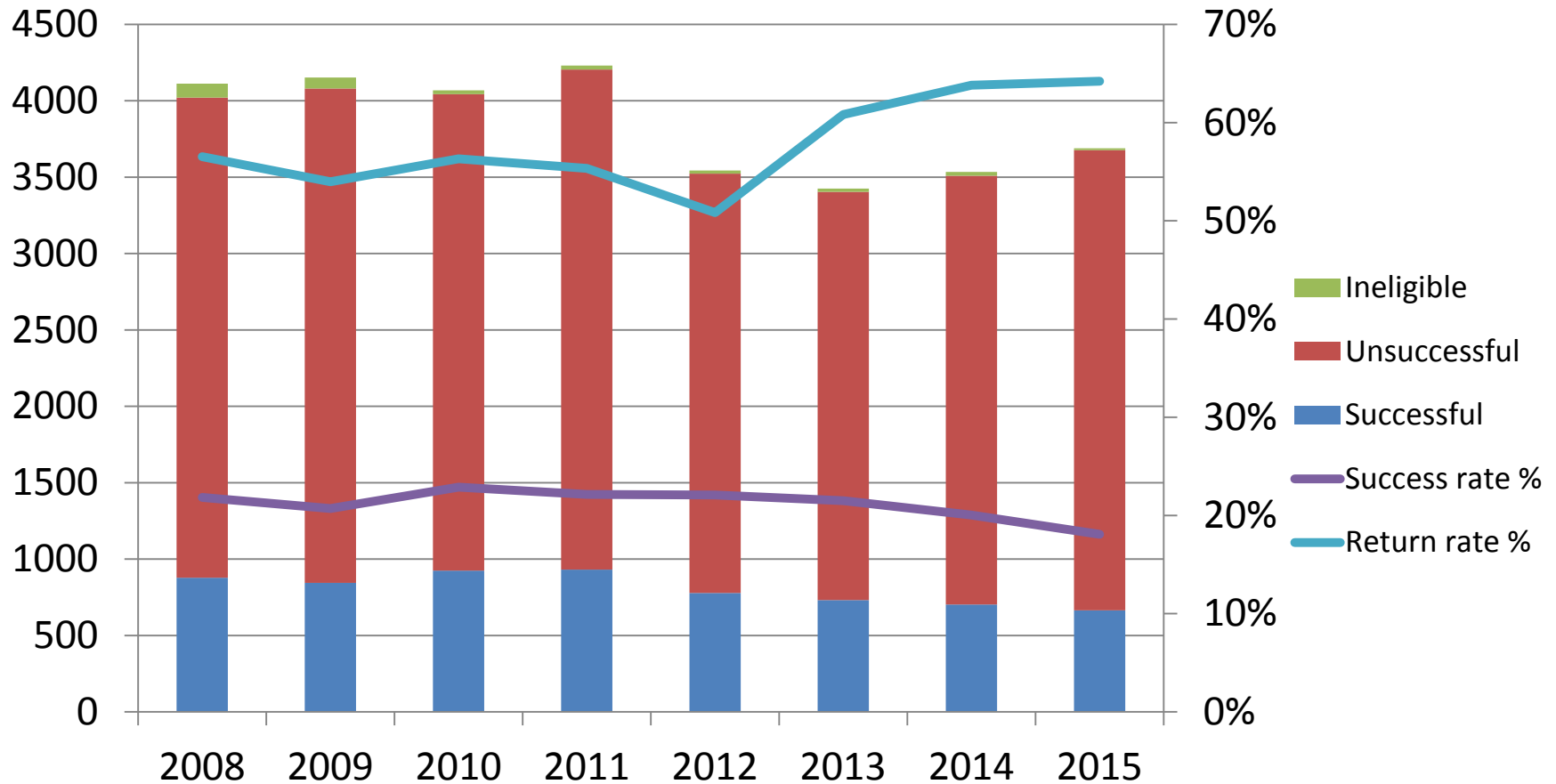


Total success rate all schemes, selected disciplines (2002–2014)



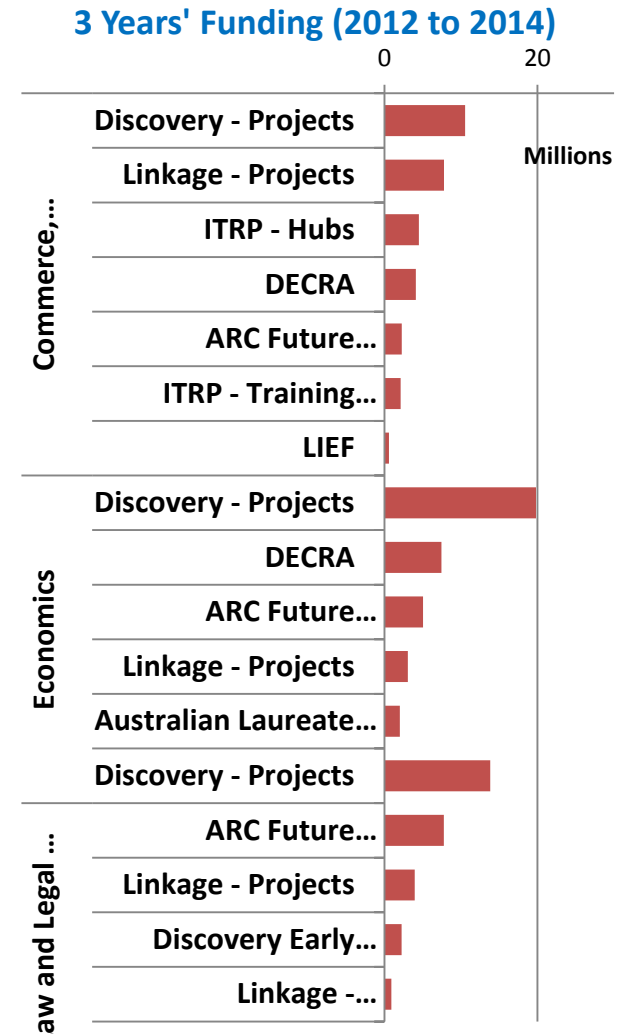
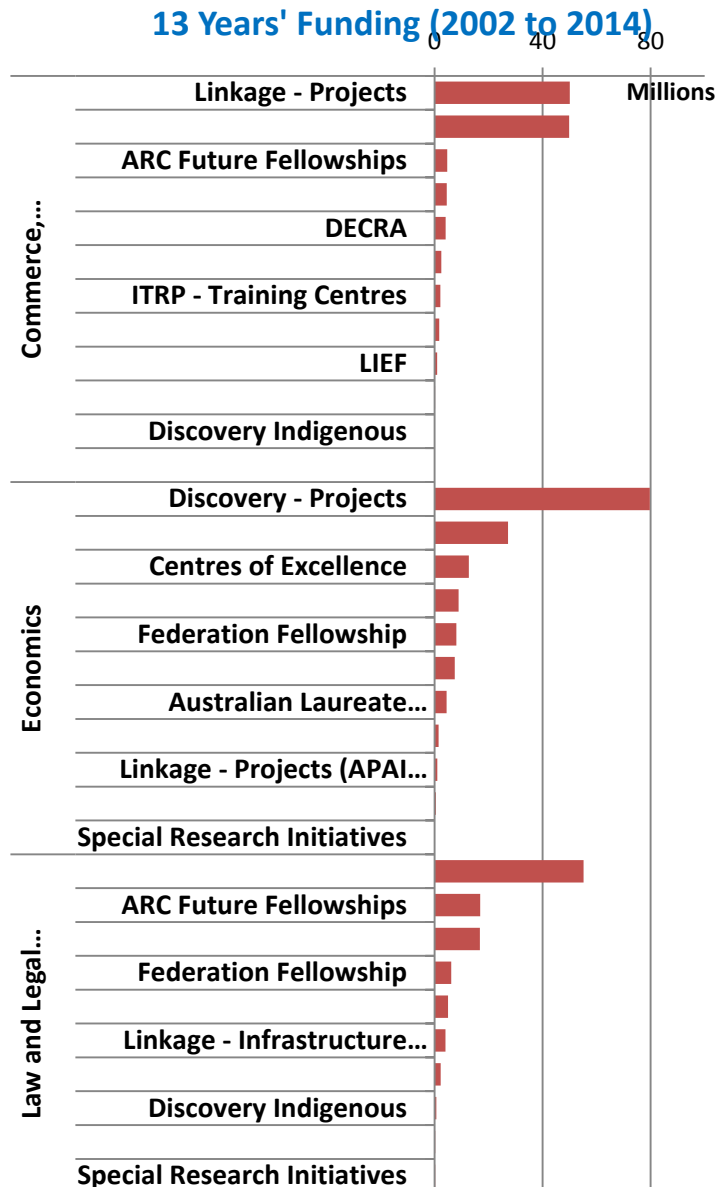
Note—data on basis of original RFCD and FoR codes for both two-digit and 4-digit disciplines

Discovery Projects—Success and return rates



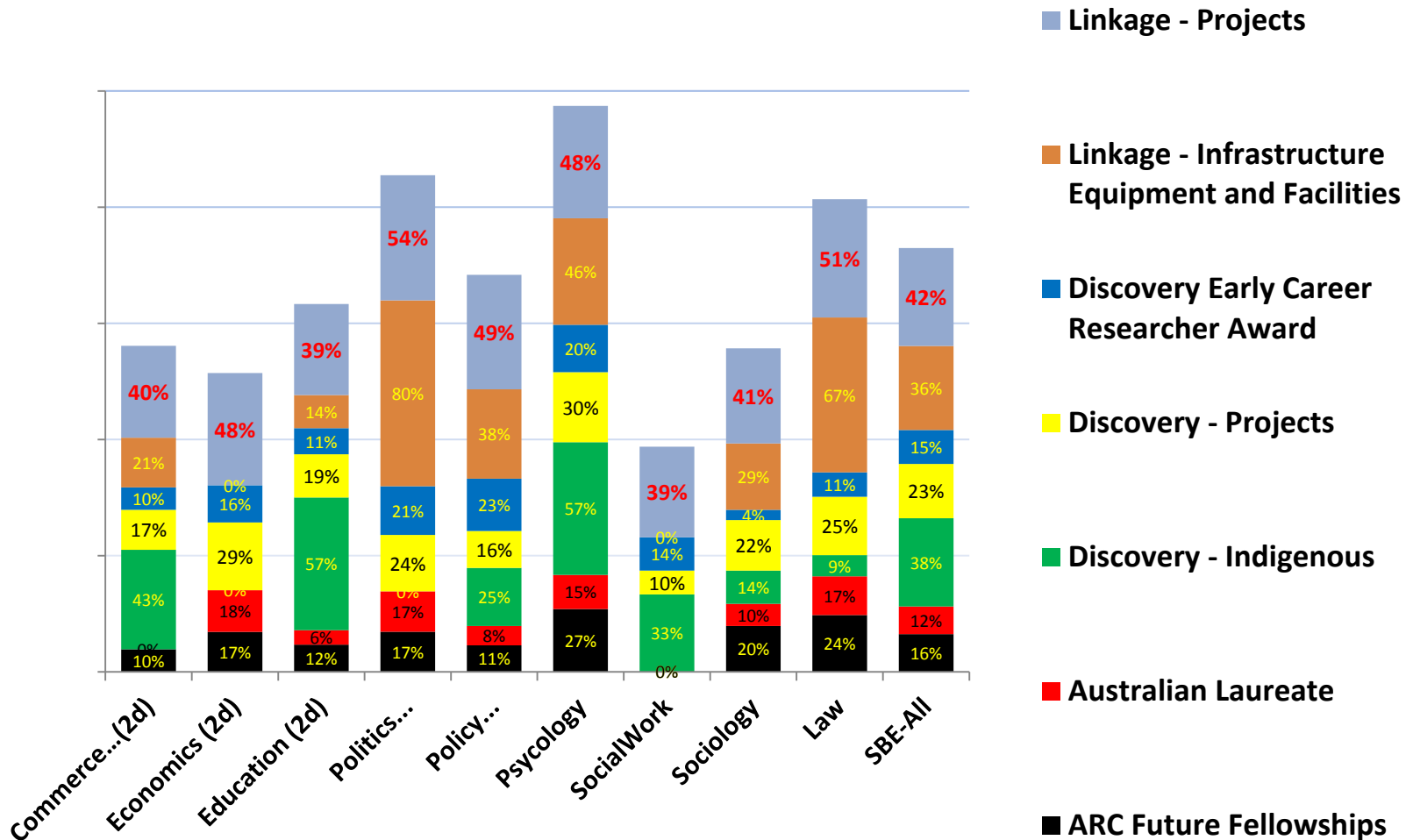
Which Scheme is more important ?

Selected disciplines



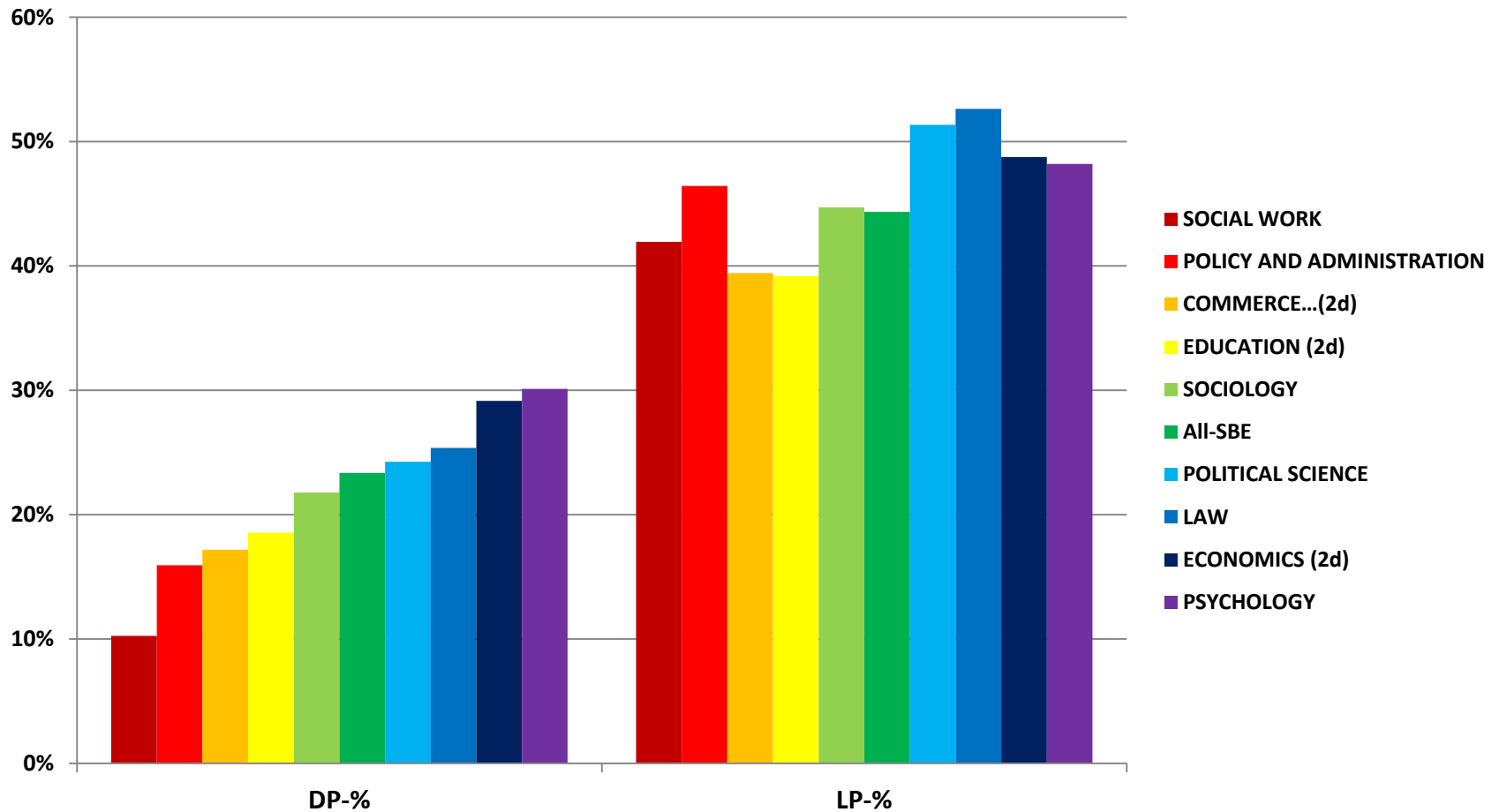
Note—data on basis of FoR codes and those translated from RFCD for both two-digit and 4-digit disciplines

Success rate in selected disciplines and schemes (2002–2014)



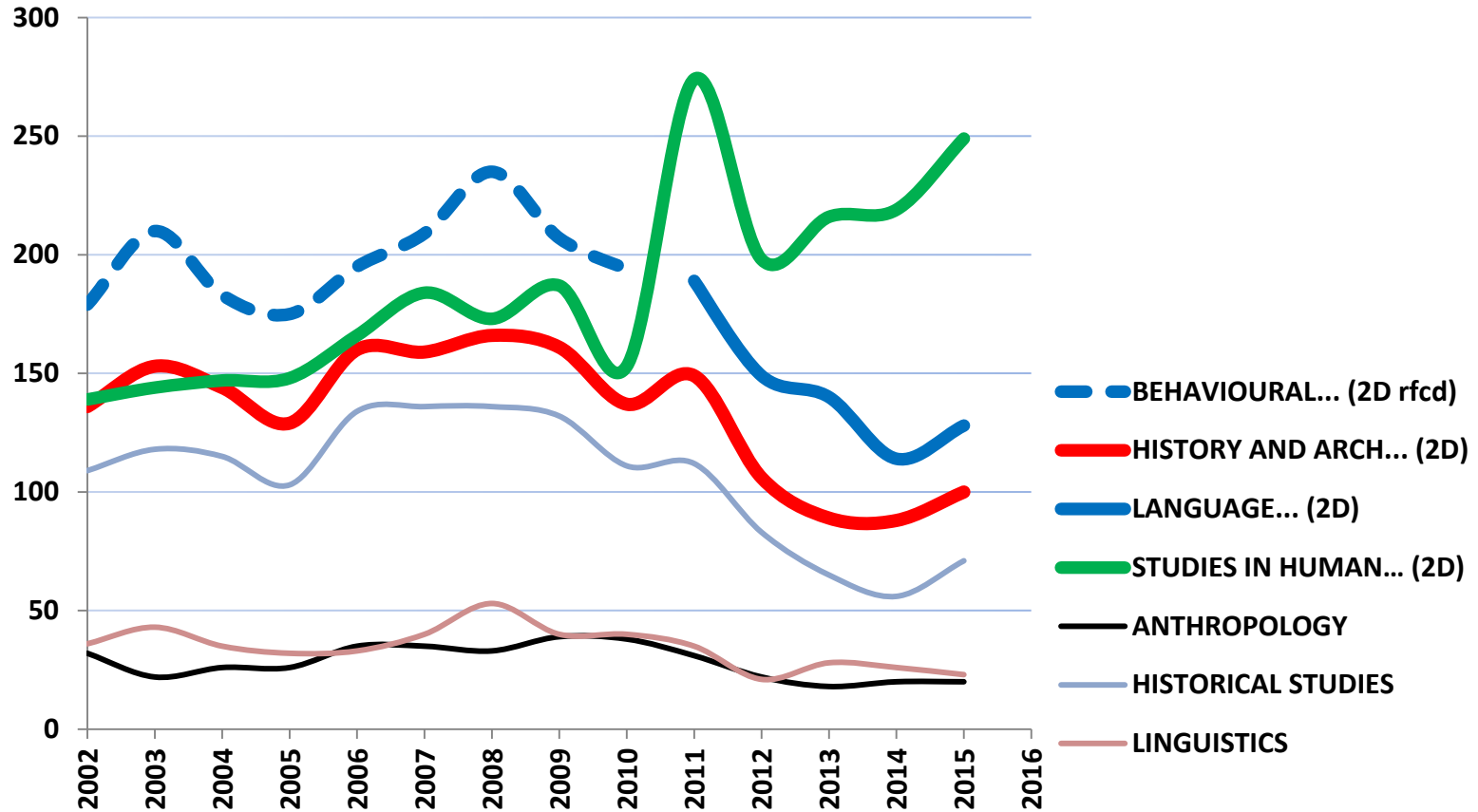
Note—data on basis of original RFCD and FoR codes for both two-digit and 4-digit disciplines

Total success rate in Discovery Projects and *Linkage Projects* (2002–2014)



Note—data on basis of original RFCD and FoR codes for both two-digit and 4-digit disciplines

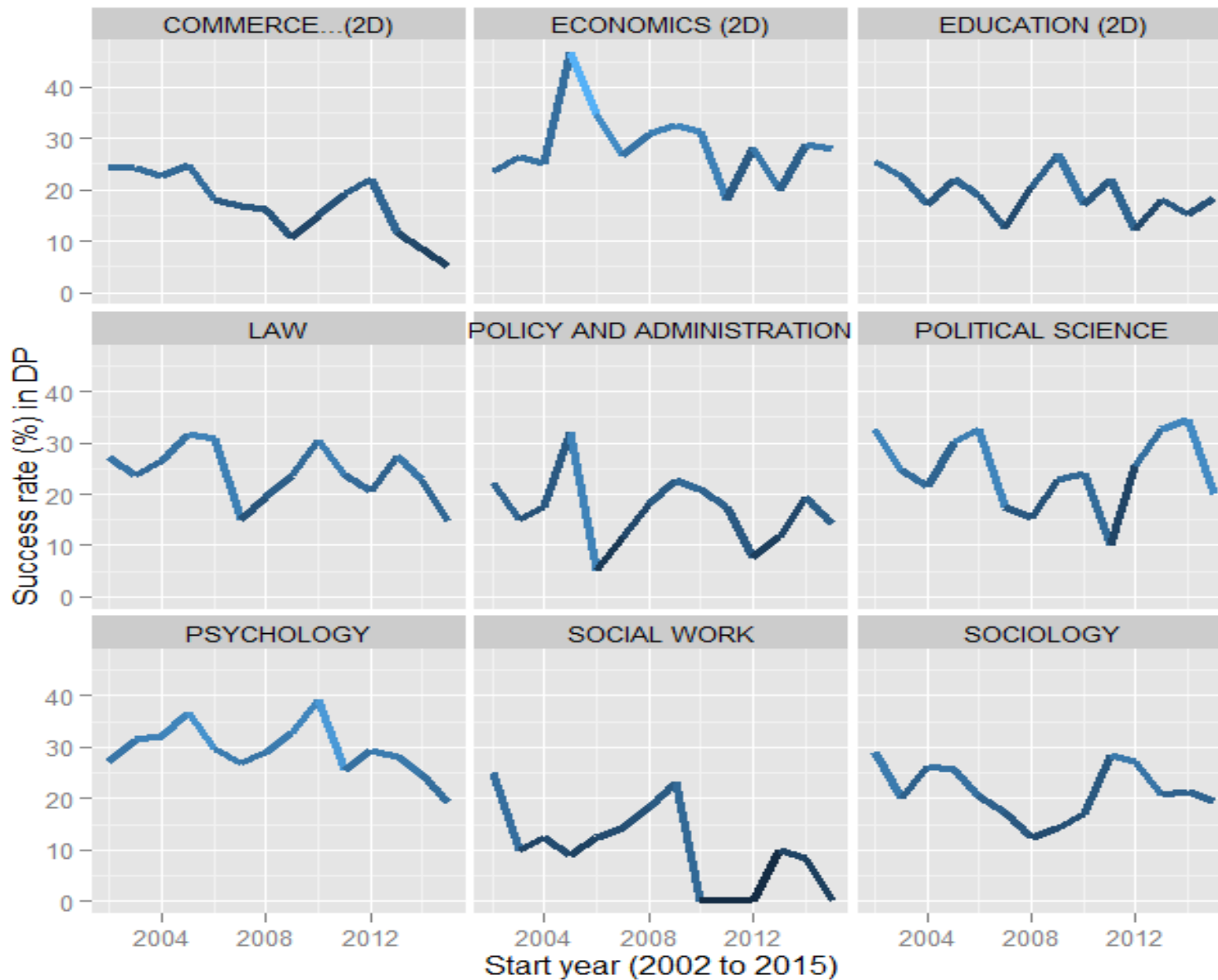
Discovery Projects (DP)—Number of proposals received, selected disciplines, 2002–2015



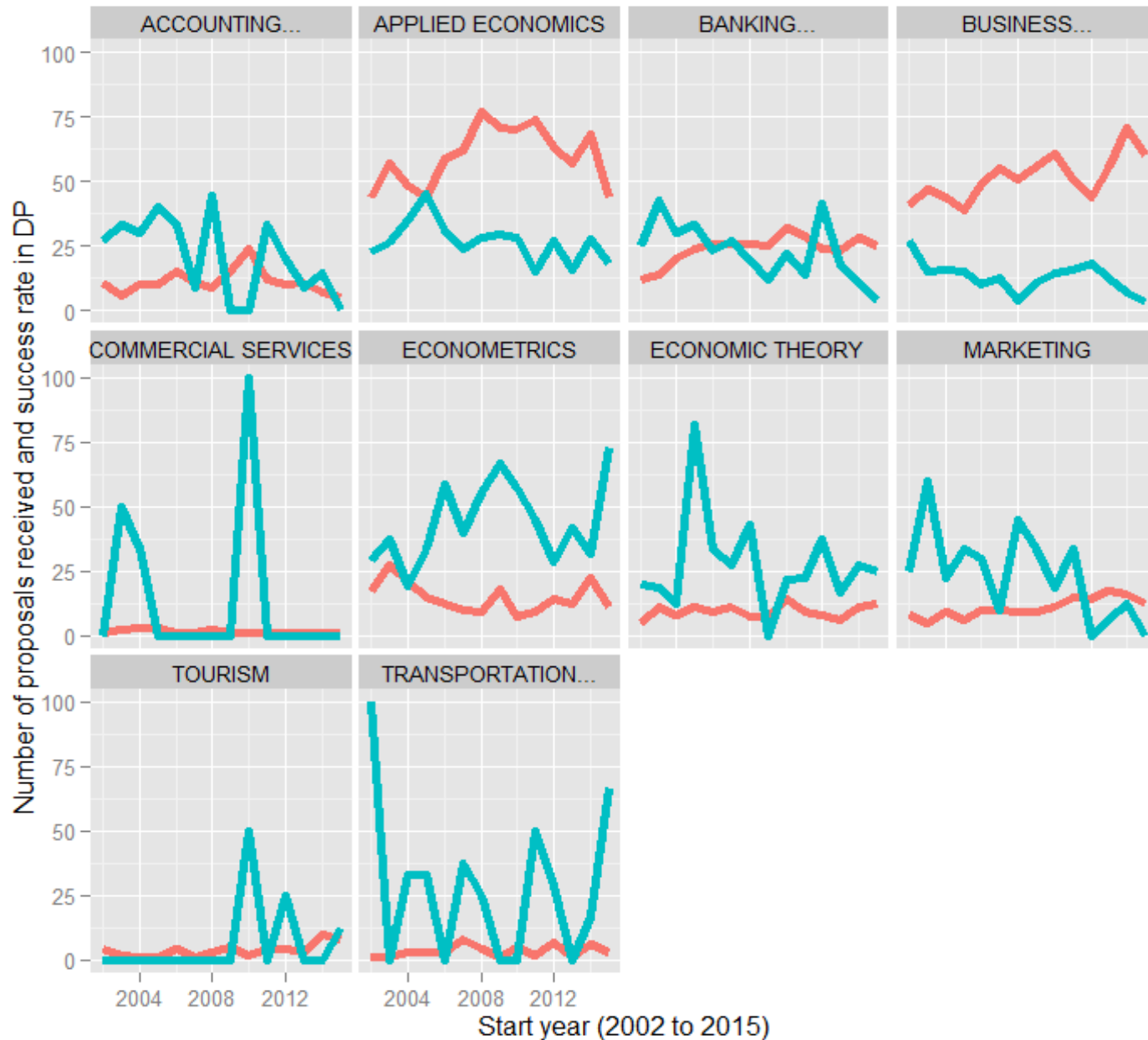
Note — Data on basis of \... and \... codes for both two-digit and -digit disciplines. ... was under behavioural and cognitive sciences in \..., but falls in language, communication and culture in \....



Success rate (%) in DP, selected disciplines, commencement year 2002 to 2015

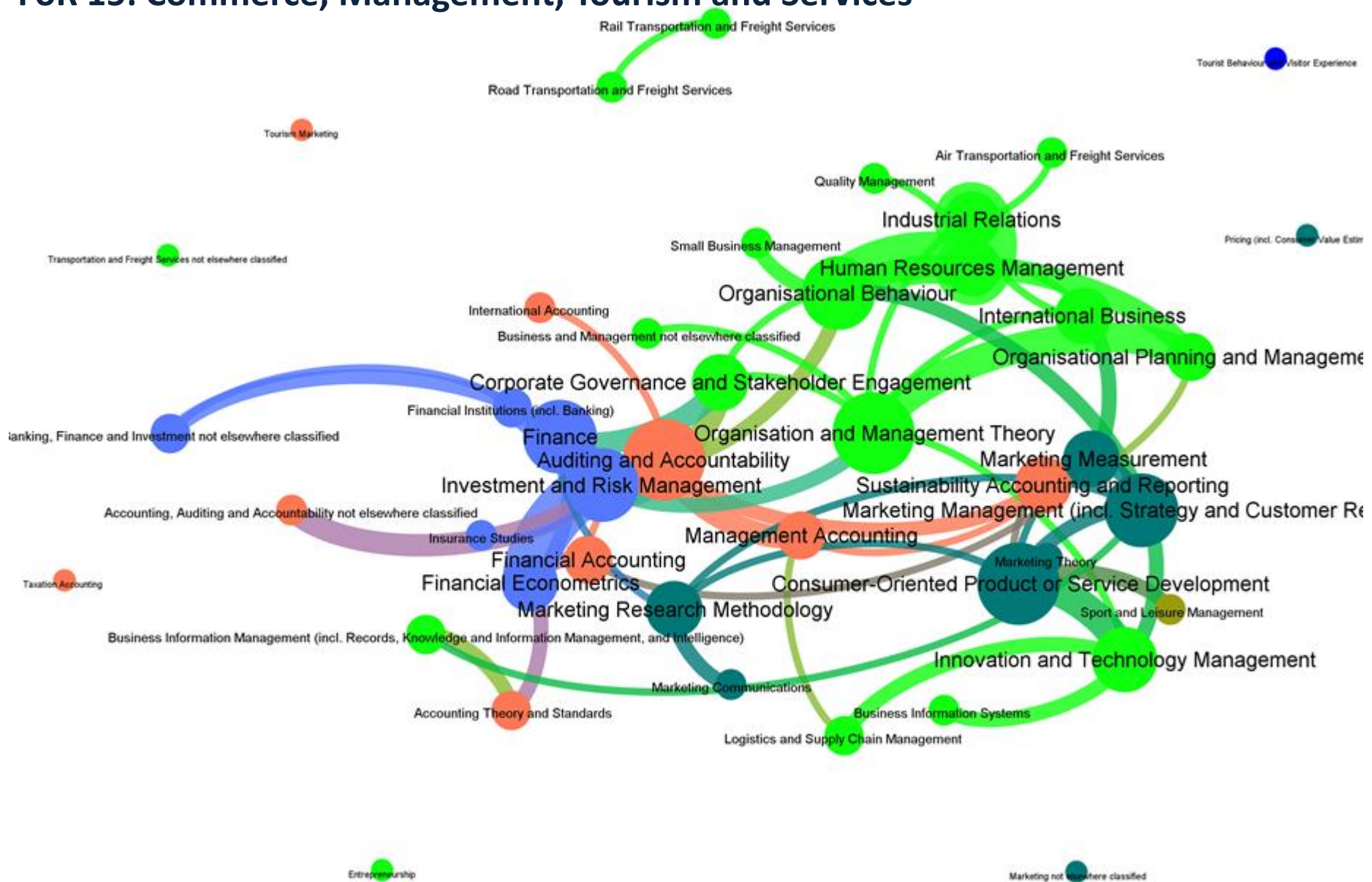


Success rate (%) and proposals in DP, selected disciplines, commencement year 2002 to 2015



FoR Network mapping...

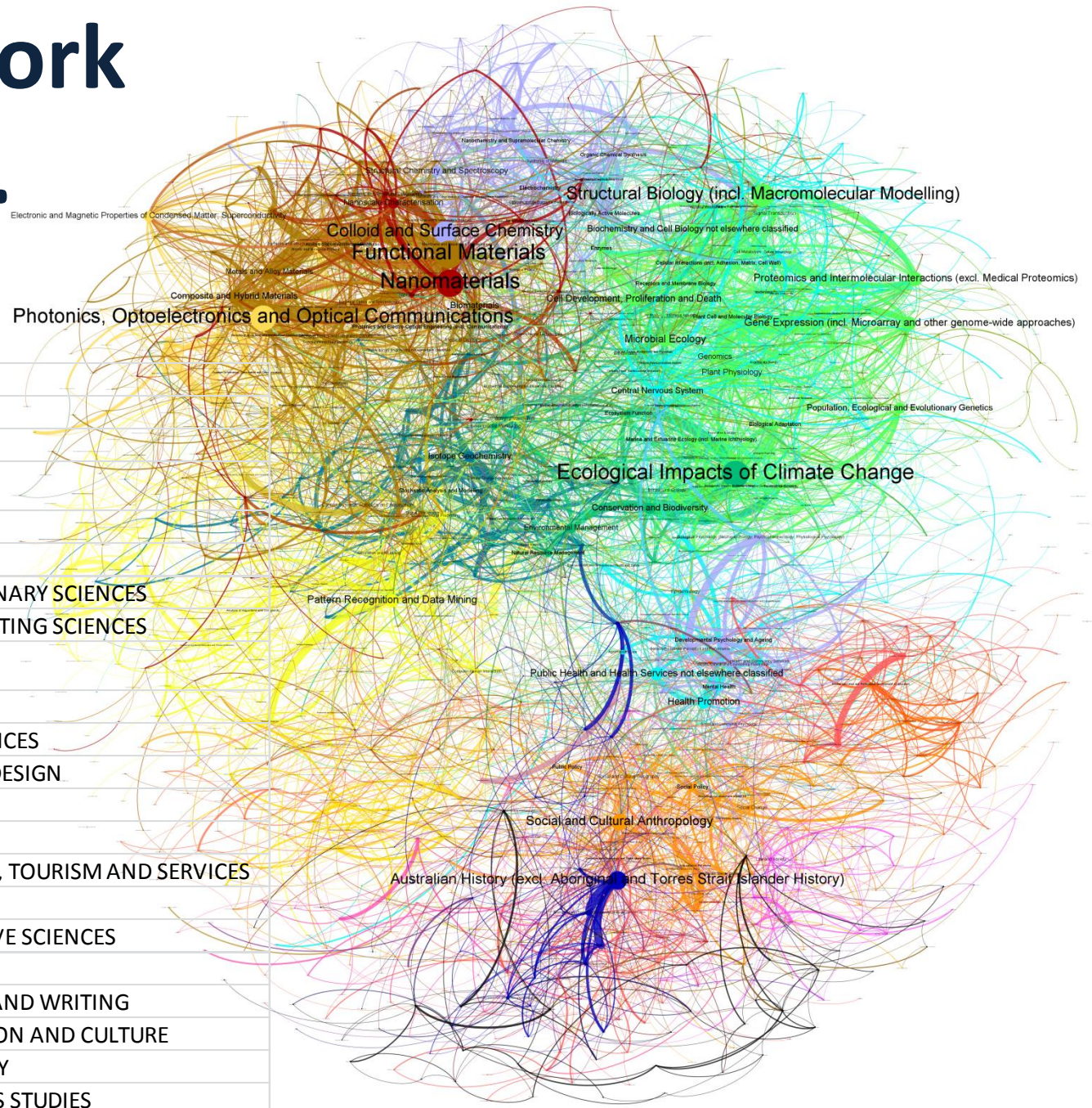
FoR 15: Commerce, Management, Tourism and Services



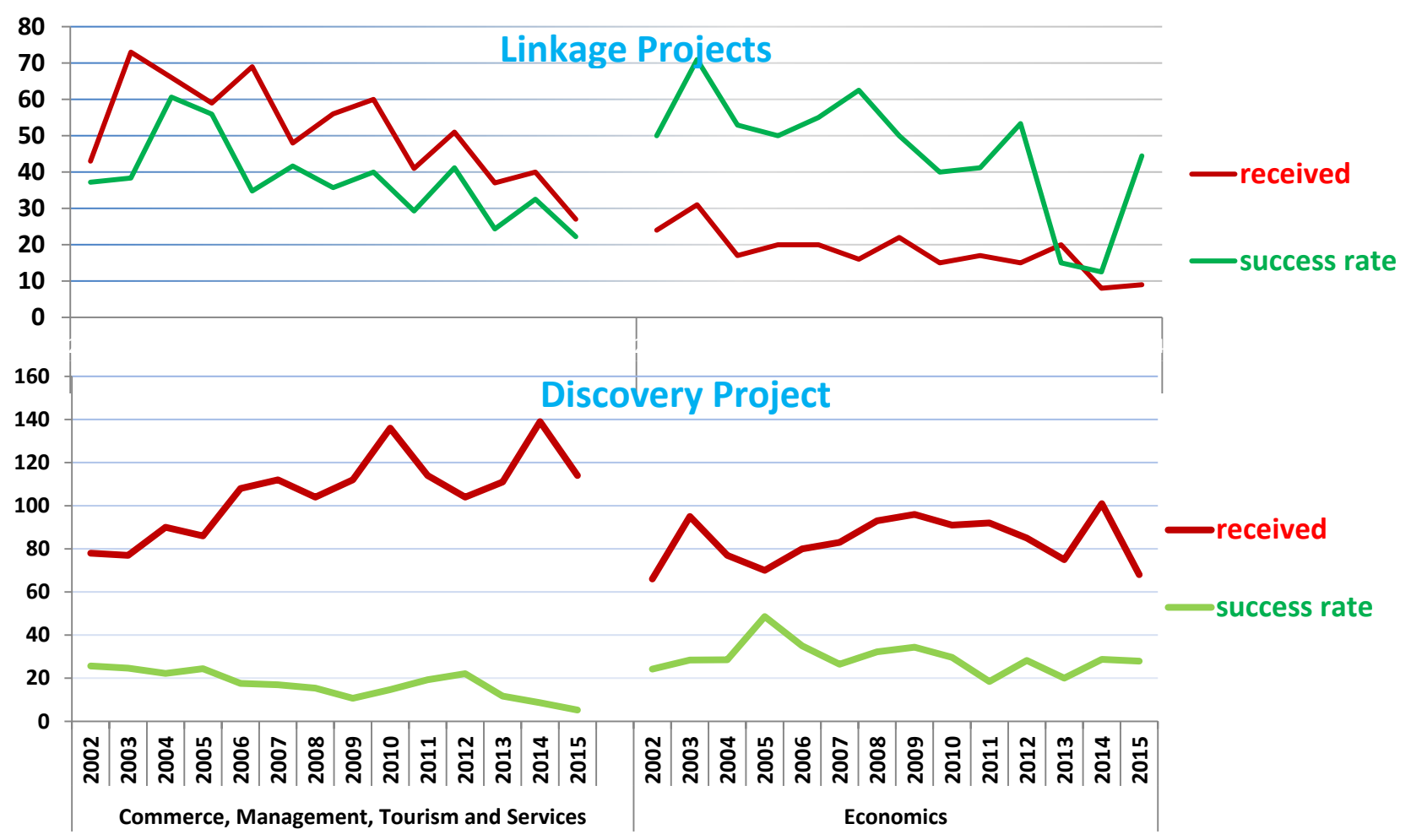
FOR Network mapping...

All disciplines

- 01 MATHEMATICAL SCIENCES
- 02 PHYSICAL SCIENCES
- 03 CHEMICAL SCIENCES
- 04 EARTH SCIENCES
- 05 ENVIRONMENTAL SCIENCES
- 06 BIOLOGICAL SCIENCES
- 07 AGRICULTURAL AND VETERINARY SCIENCES
- 08 INFORMATION AND COMPUTING SCIENCES
- 09 ENGINEERING
- 10 TECHNOLOGY
- 11 MEDICAL AND HEALTH SCIENCES
- 12 BUILT ENVIRONMENT AND DESIGN
- 13 EDUCATION
- 14 ECONOMICS
- 15 COMMERCE, MANAGEMENT, TOURISM AND SERVICES
- 16 STUDIES IN HUMAN SOCIETY
- 17 PSYCHOLOGY AND COGNITIVE SCIENCES
- 18 LAW AND LEGAL STUDIES
- 19 STUDIES IN CREATIVE ARTS AND WRITING
- 20 LANGUAGE, COMMUNICATION AND CULTURE
- 21 HISTORY AND ARCHAEOLOGY
- 22 PHILOSOPHY AND RELIGIOUS STUDIES

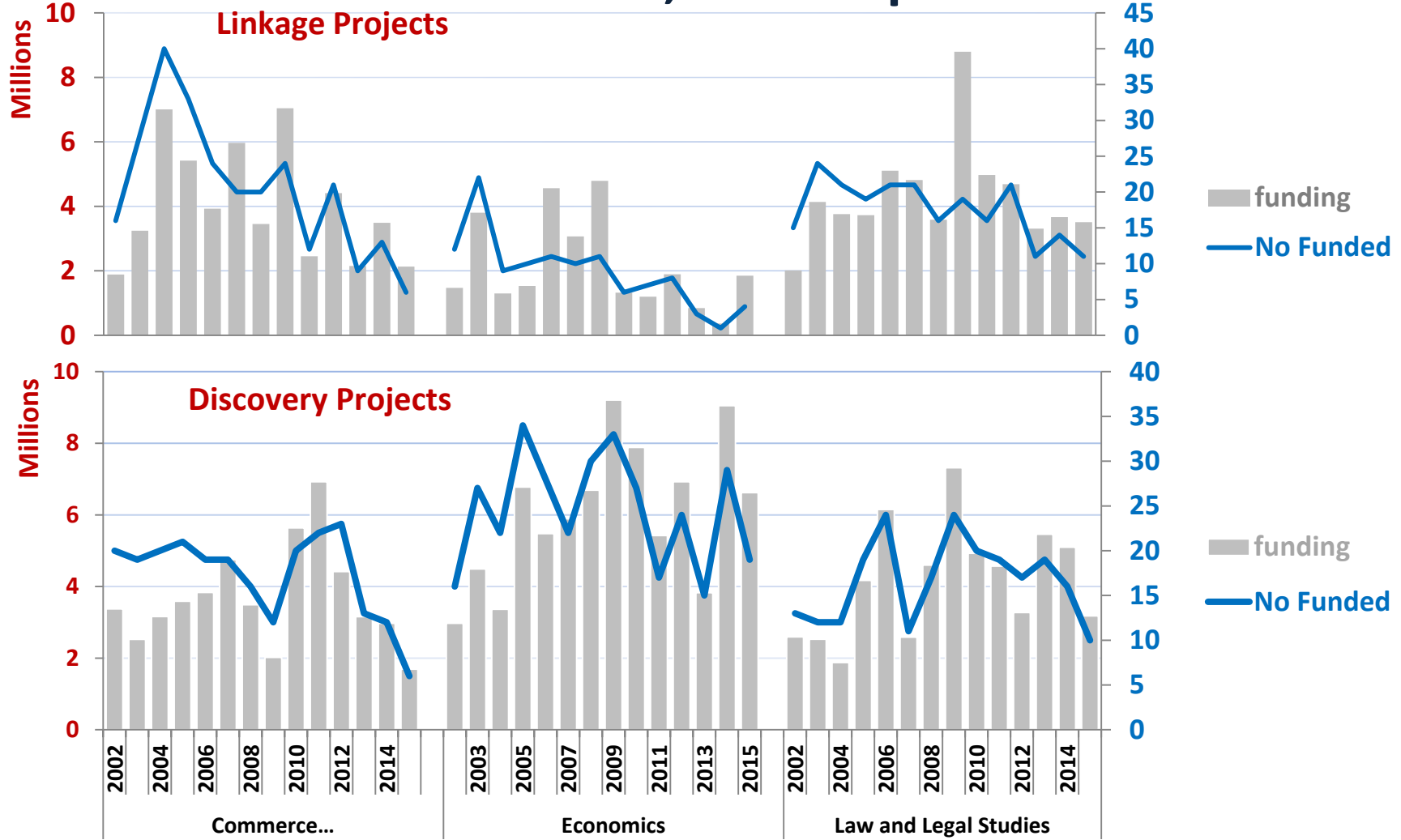


Number of proposals received and success rate (%), comparison between LP and DP in Commerce and Economics



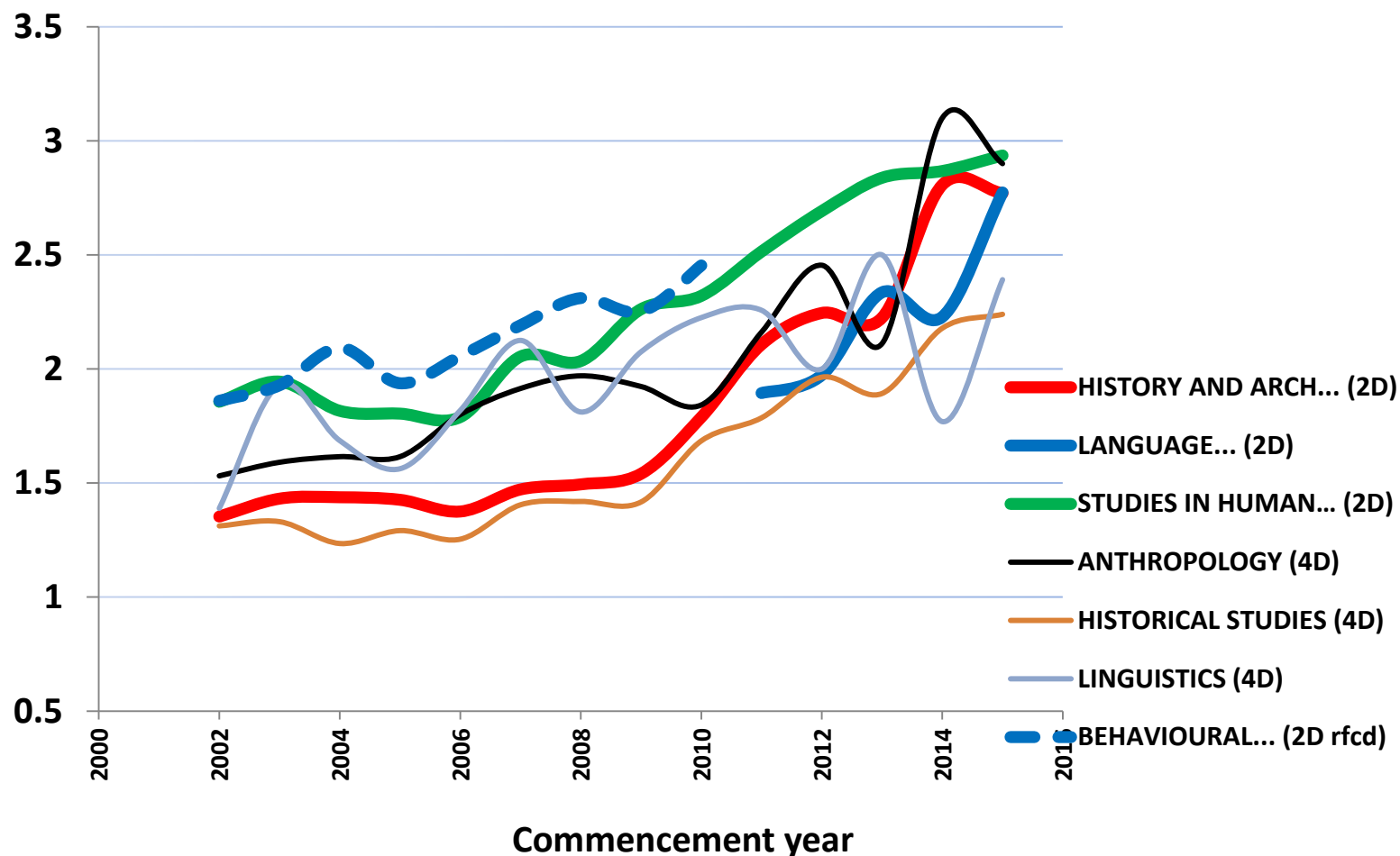
Note - data on basis of .0\ codes and those translated from \. . for both two-digit and -digit disciplines.

ARC funding and number of projects funded in DP02 to DP15 and LP02 to LP14, for comparison

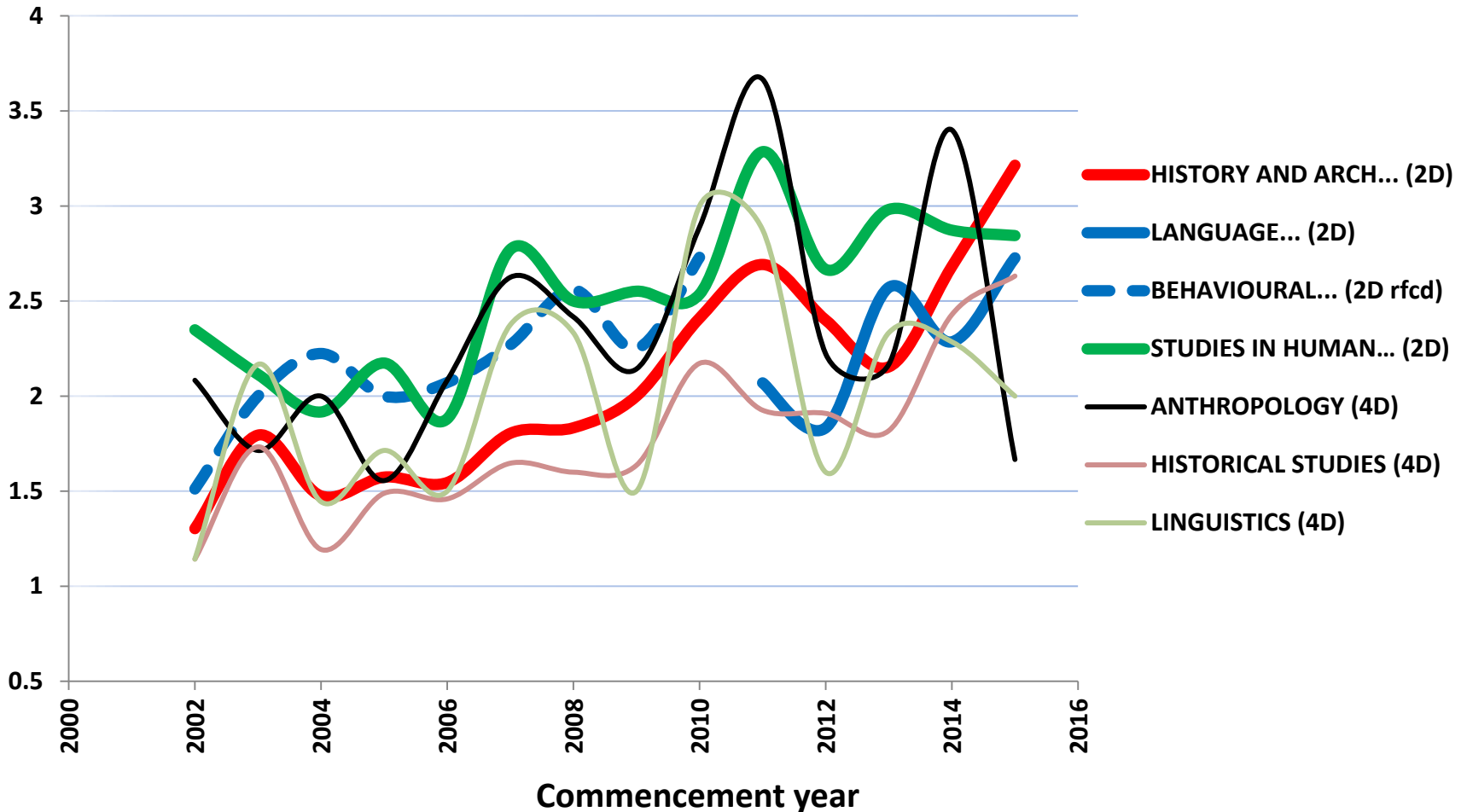


Note - data on basis of .0\ codes and those translated from \. . for both two-digit and -digit disciplines

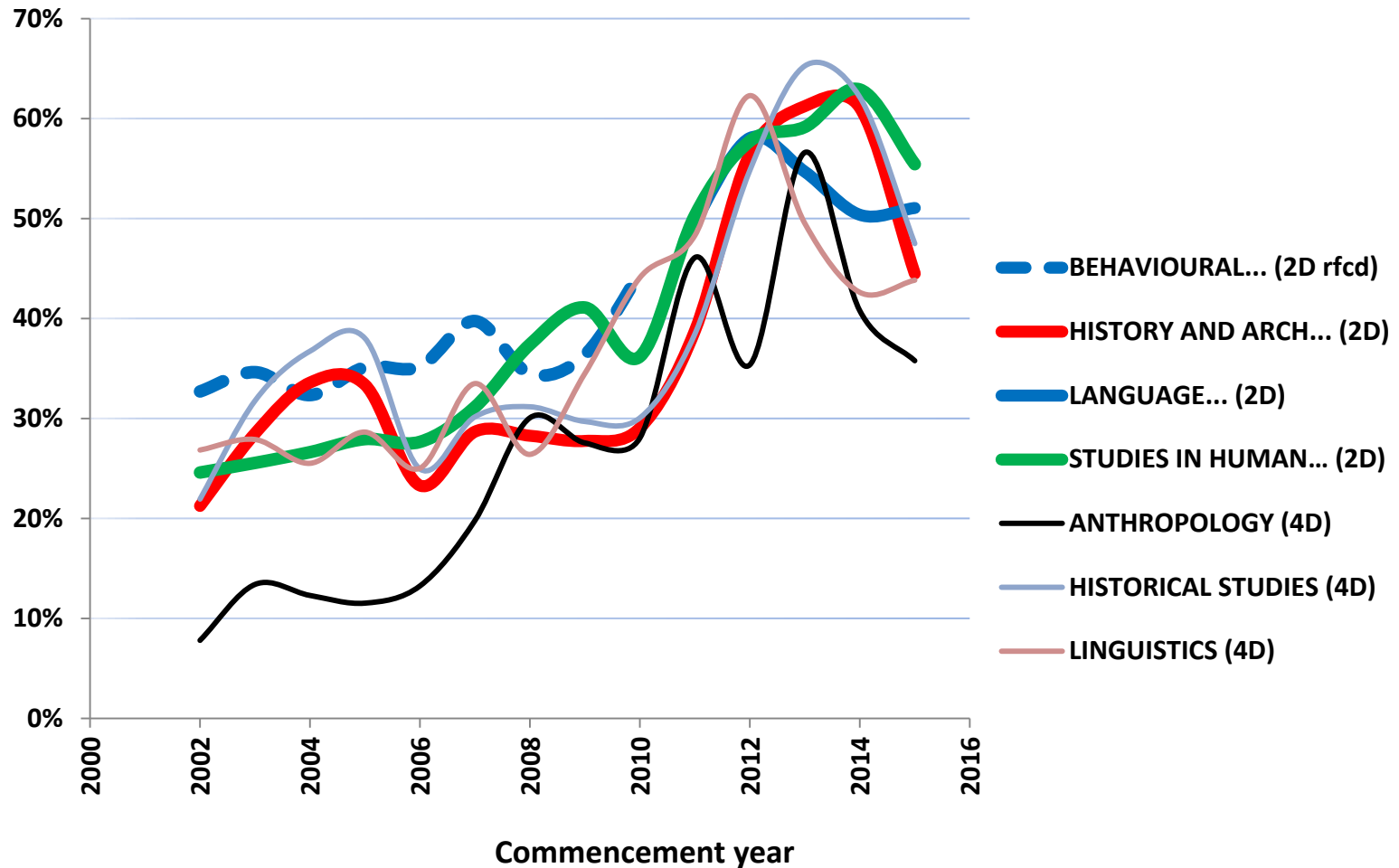
Average number of named researchers (including Partner Investigators) on Discovery Projects proposals submitted



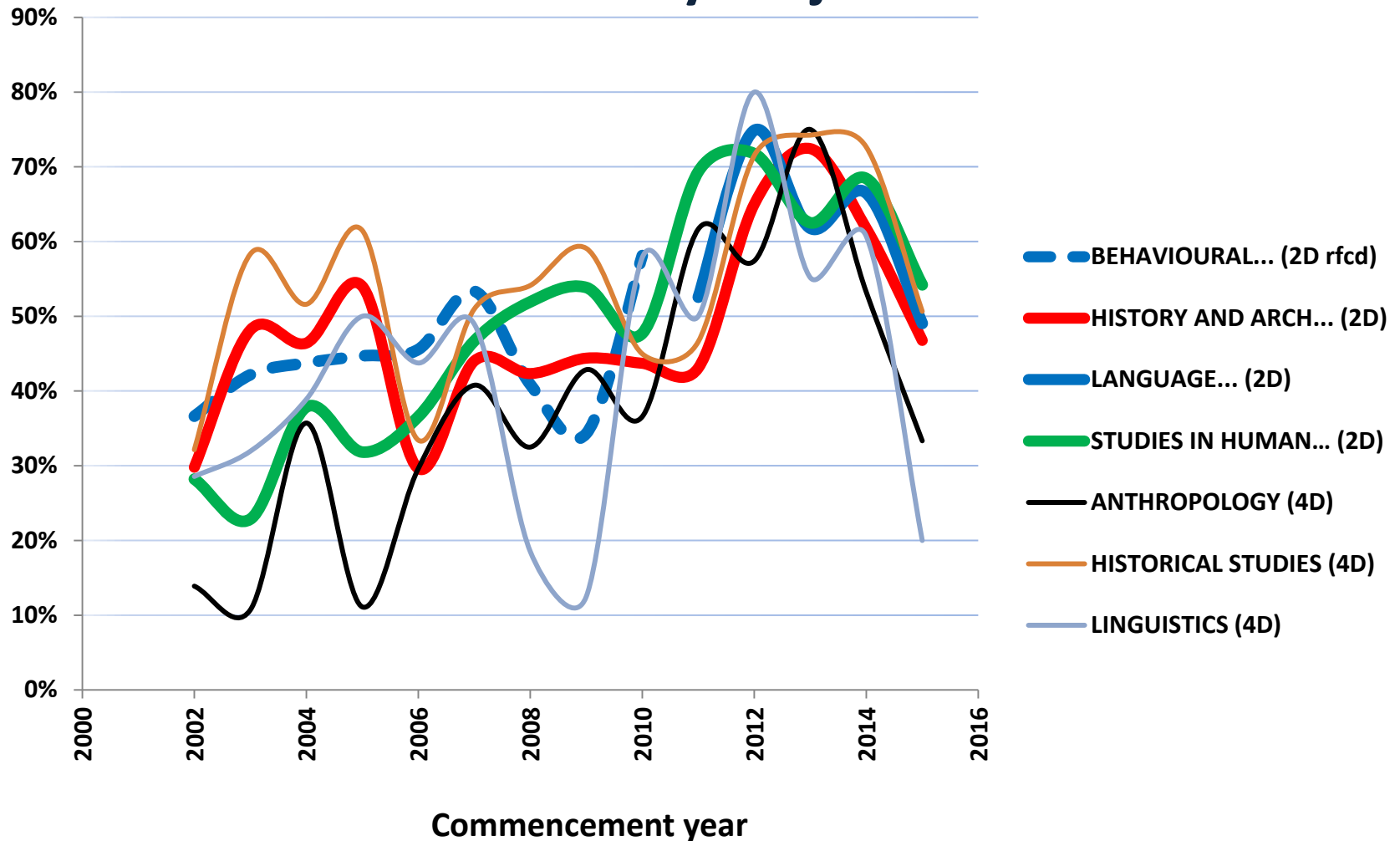
Average number of named researchers (incl. Partner investigators) on funded Discovery Projects



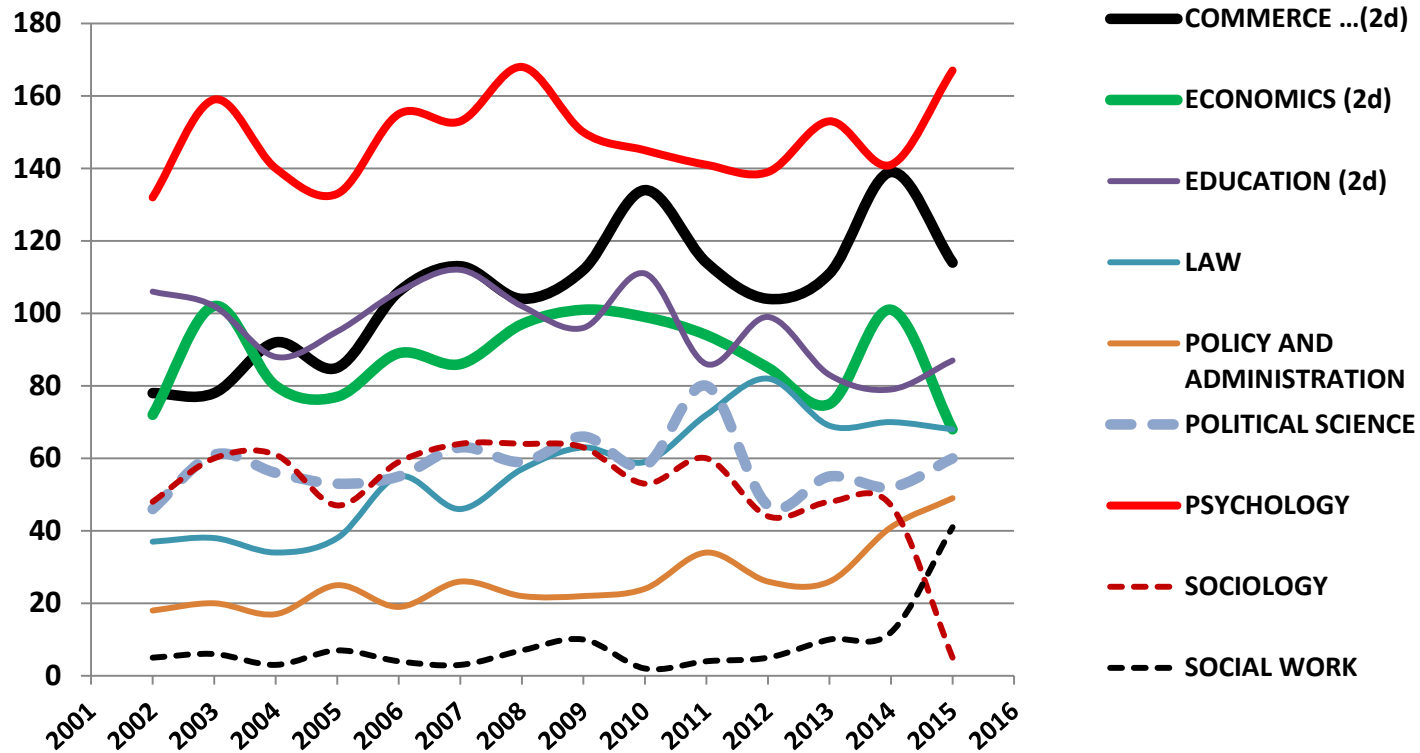
Average Proportion of Prof and A/Prof Type of Researchers (including Partner Investigators) on Discovery Projects Proposals



Average Proportion of Prof and A/Prof Type of Researchers (including Partner Investigators) on funded Discovery Projects

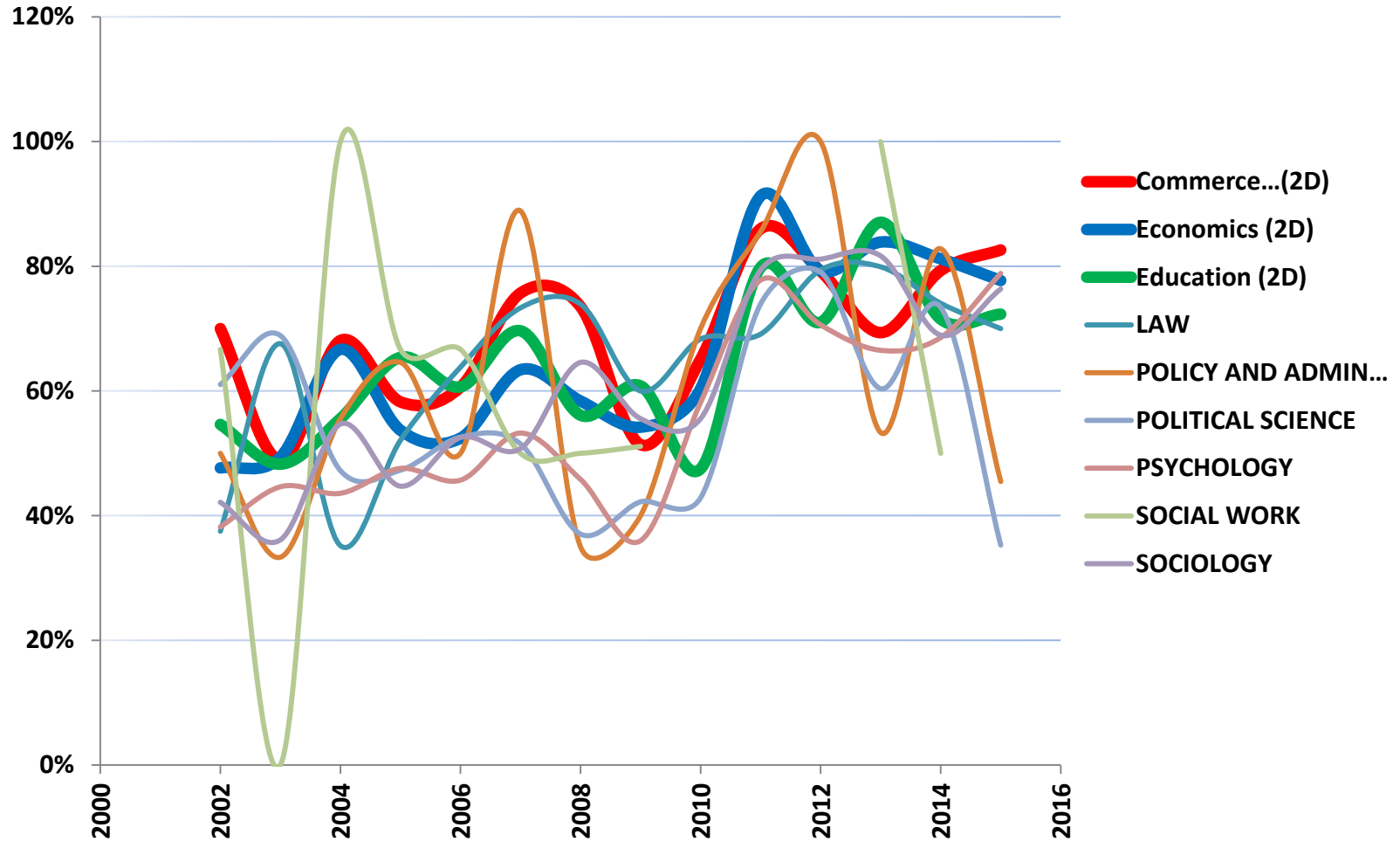


Discovery Projects (DP) – Number of proposals received, selected disciplines, commencement year 2002 to 2015

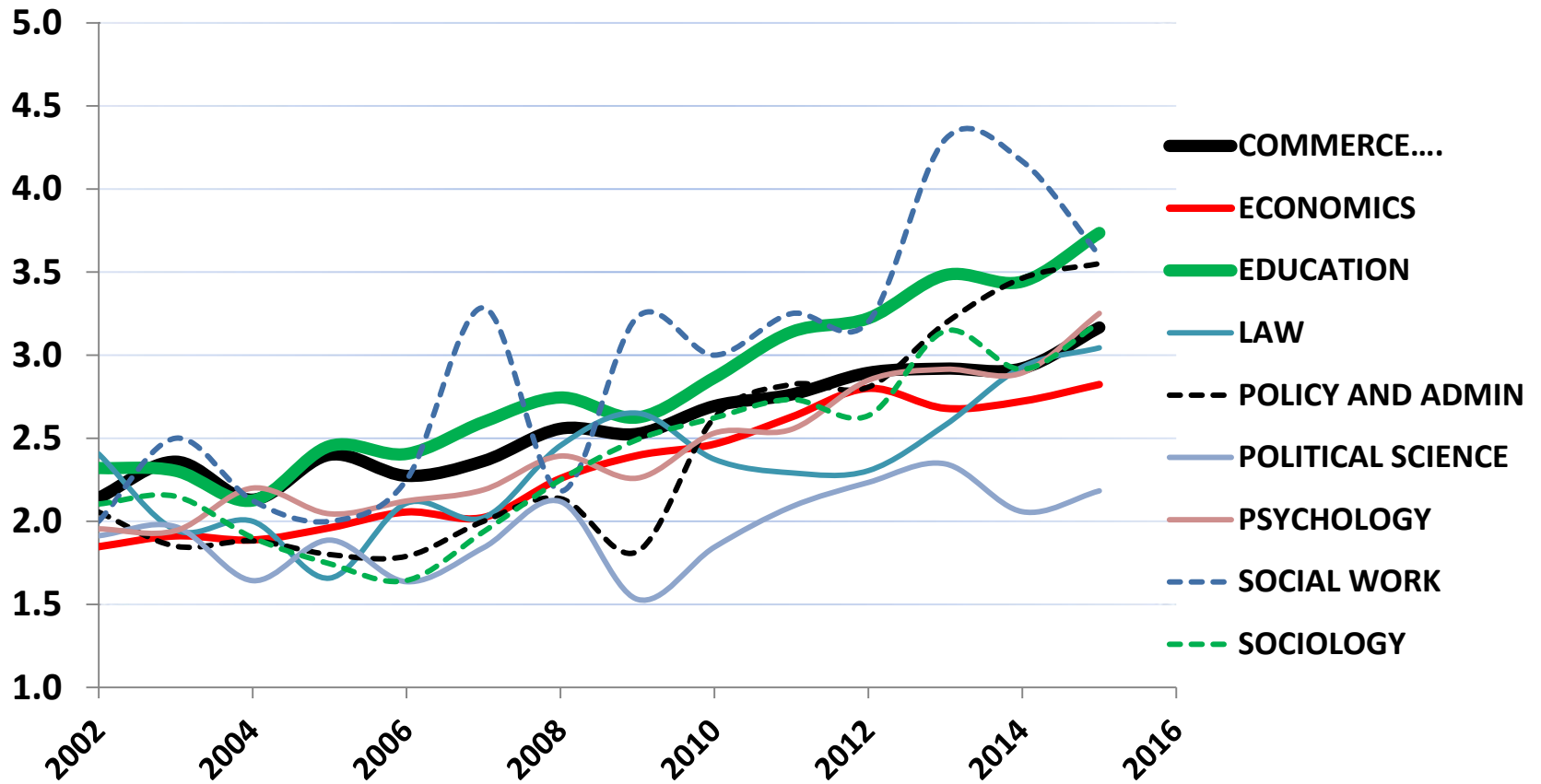


Note – data on basis of \ . . . and . o \ codes for both two-digit and -digit disciplines

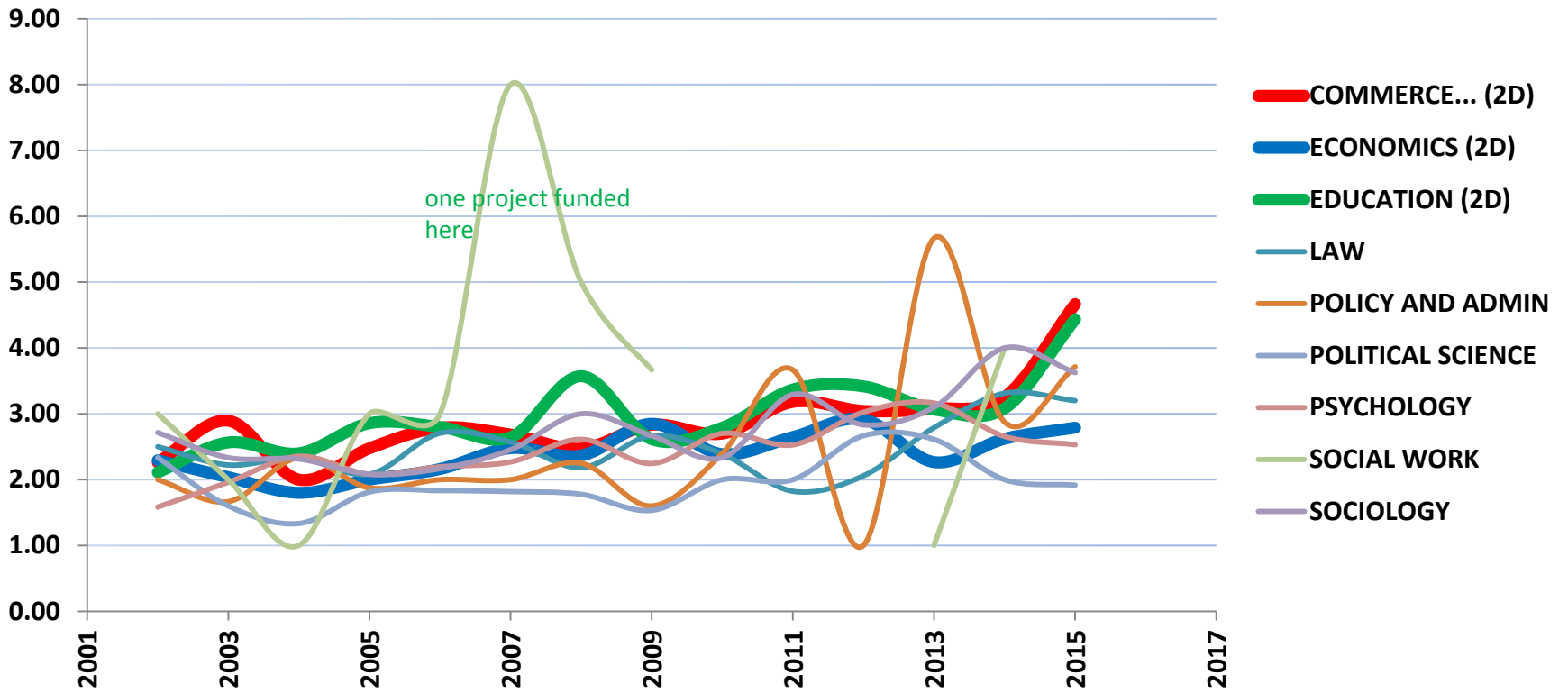
Proportion of Prof and A/Prof type of researchers (incl. PI) on FUNDED Discovery Projects each year (not incl. DECRA)



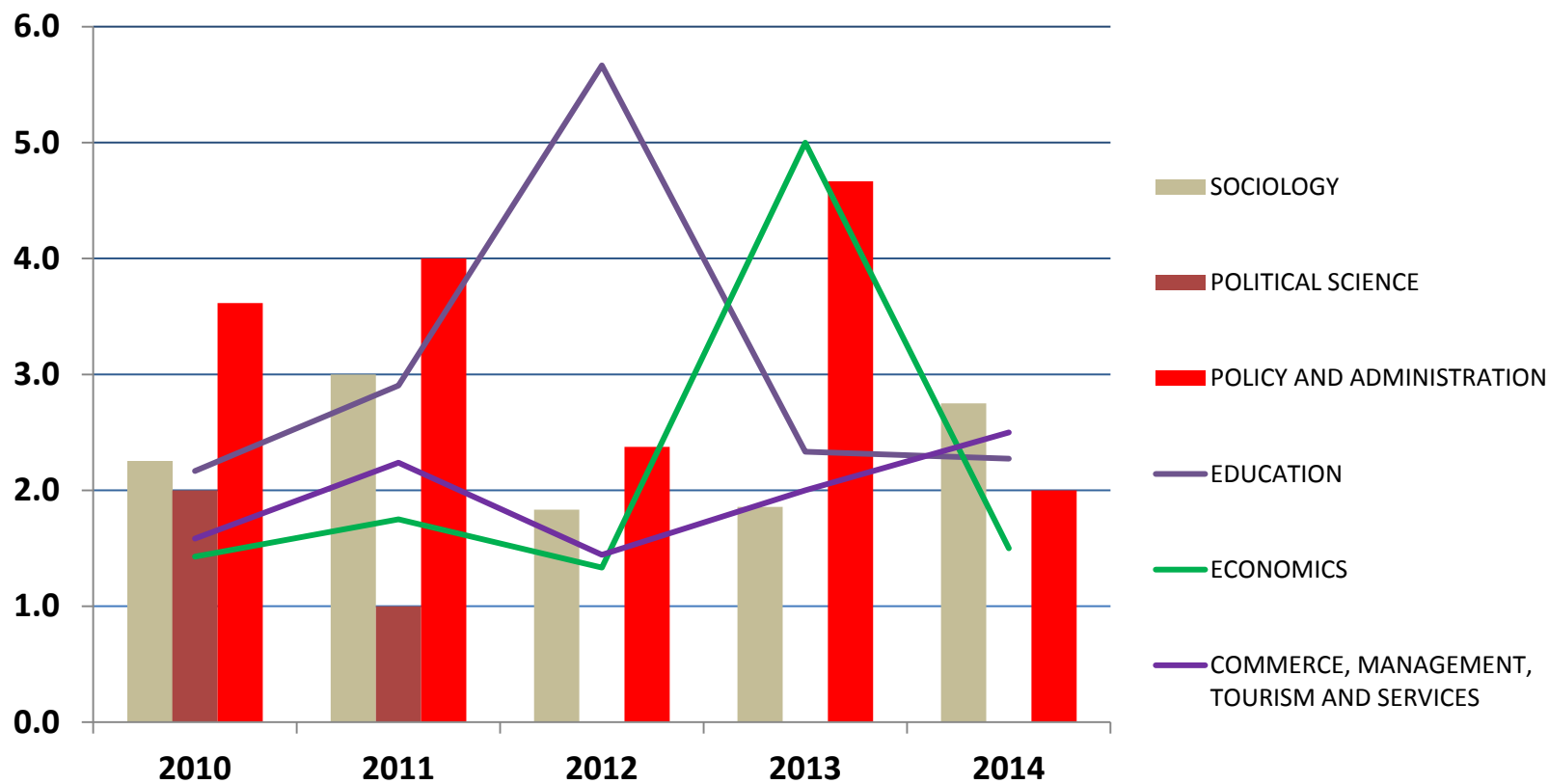
Average number of researchers (including Partner Investigators) on each Discovery Projects proposal



Average number of named researchers (including Partner Investigators) on each funded Discovery Project



Average number of Partner Organisations on each Linkage Project



Thank you

Research